

WHAT CAN WE DO WHEN WE LACK ADEQUATE TESTS ?

58th CREST Open Workshop
Breakout discussion summary

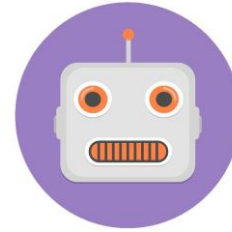
CREATETESTS

- EvoSuite
- Record real world usage
- Re-use tests from tests across (compatible) components
- Metamorphic testing
- Symbolic execution
- Isomorphic Regression Testing

MEASURE TESTS

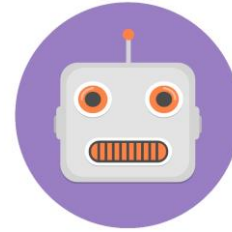
See COW 57 on Information Theory and testing to measure the quality of tests and how to create diversity in test suites.

BOTS



Watson Watcher: is bot that recognizes bad patches, bad because they are unlikely to solve the issue or because they might “consume” a lot of code review time.

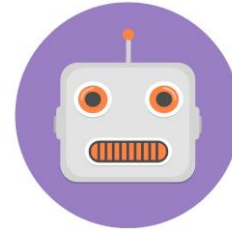
BOTS



Watson Watcher: is bot that recognizes bad patches, bad because they are unlikely to solve the issue or because they might “consume” a lot of code review time.

Patrick Patcher: is a bot that creates patches (APR) for bugs and compare them to the human produced patch to improve quality over time. Sits on the background for a long time and at some point can become active in the code review process.

BOTS



Watson Watcher: is bot that recognizes bad patches, bad because they are unlikely to solve the issue or because they might “consume” a lot of code review time.

Patrick Patcher: is a bot that creates patches (APR) for bugs and compare them to the human produced patch to improve quality over time. Sits on the background for a long time and at some point can become active in the code review process.

Galois: is a bot that can create a high level specification and that the programmer/tester can ask questions in “English”.